

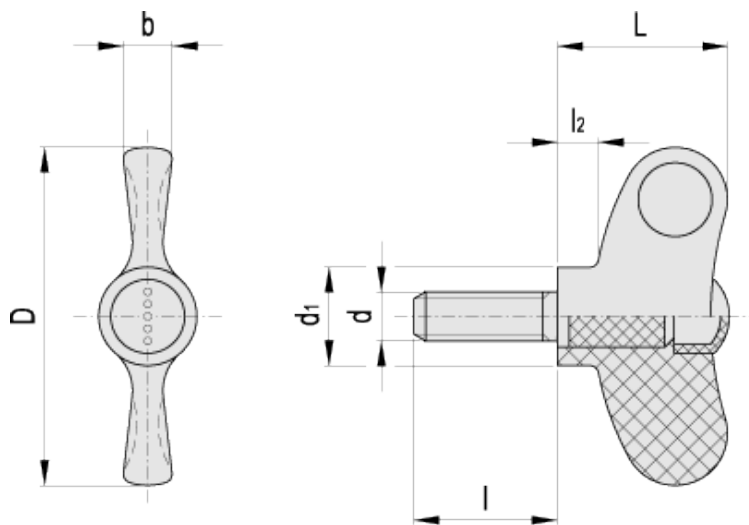
EWN.SST-p

Wing screws



ELESA Original design

INOX Stainless Steel **ERGOSTYLE®**



technical informations

Material

Glass-fibre reinforced polyamide based (PA) technopolymer. Resistant to solvents, oils, greases and other chemical agents.

Colour

Grey-black, matte finish.

Cap

Technopolymer in Ergostyle colours, matte finish; supplied assembled, press-fit assembly, removable by a screwdriver. Available also as accessory sold separately (see caps table).

Standard execution

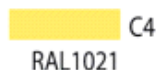
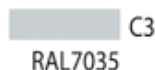
AISI 303 stainless steel threaded stud, chamfered flat end according to UNI 947 : ISO 4753 (see [Technical Data](#)).

Ergonomy and design

The slightly concave marks on the wings help to position the fingers in order to apply the maximum force when tightening.



* Complete with colour index, example: 224536-C2 EWN.48 SST-p-M6x20-C2



Standard Elements		Main dimensions					Threaded stud		C #	Weight
Code	Description	D	L	d ₁	l ₂	b	d _{6g}	l	[Nm]	g
224536-*	EWN.48 SST-p-M6x20-*	47	24	13.5	5.5	7	M6	20	11	13
224546-*	EWN.48 SST-p-M6x30-*	47	24	13.5	5.5	7	M6	30	11	15
224549-*	EWN.48 SST-p-M8x20-*	47	24	13.5	5.5	7	M8	20	11	20
224551-*	EWN.48 SST-p-M8x30-*	47	24	13.5	5.5	7	M8	30	11	22
224553-*	EWN.48 SST-p-M8x40-*	47	24	13.5	5.5	7	M8	40	11	25
224626-*	EWN.55 SST-p-M8x20-*	55	28	16	6.5	8	M8	20	16	23
224636-*	EWN.55 SST-p-M8x30-*	55	28	16	6.5	8	M8	30	16	26
224638-*	EWN.55 SST-p-M8x40-*	55	28	16	6.5	8	M8	40	16	30
224856-*	EWN.70 SST-p-M10x20-*	70	36	20	8	10	M10	20	45	41
224866-*	EWN.70 SST-p-M10x30-*	70	36	20	8	10	M10	30	45	47
224876-*	EWN.70 SST-p-M10x40-*	70	36	20	8	10	M10	40	45	54

"Max limit Tightening torque" means the max torque value at which the metal insert, in normal conditions of use, is perfectly and strongly anchored to the plastic material.

Code	Description	Cap for
29752-*	ECA.W2-*	EWN.48
29753-*	ECA.W3-*	EWN.55
29754-*	ECA.W4-*	EWN.70

* Complete with colour index (C1,...,C6).

This product had the following design awards:



ELESA and GANTER models all rights reserved in accordance with the law. Always mention the source when reproducing our drawings.

STANDARD MACHINE ELEMENTS WORLDWIDE